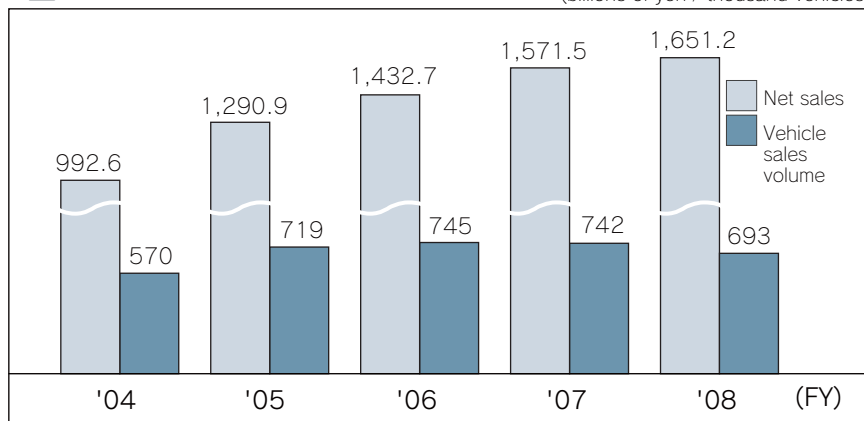


Economic Performance

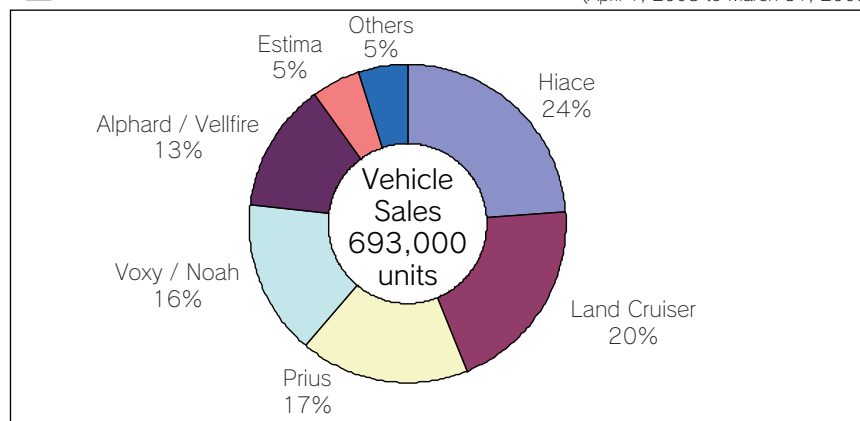
In FY2008, with large reductions in production in the fourth quarter, vehicle sales volume decreased by 6.5%, or 49,000 vehicles, compared to the previous fiscal year. However, net sales for FY2008 increased to 1,651.2 billion yen, a 5.1% increase by 79.7 billion yen compared to the previous fiscal year. The increase in net sales was due to changes in vehicle structure and increased production sales of the Land Cruiser chassis. Due to the sudden decrease in the number of vehicles sold, profits fell by 22.9 billion yen compared to the previous fiscal year, and we posted a 0.5 billion yen operating loss.

Shifts in Economic Indicators (consolidated basis)

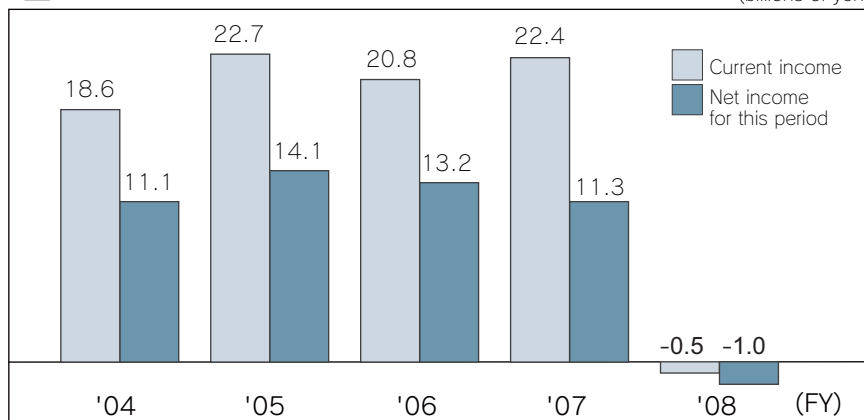
■ Net Sales and Vehicle Sales Volume (billions of yen / thousand vehicles)



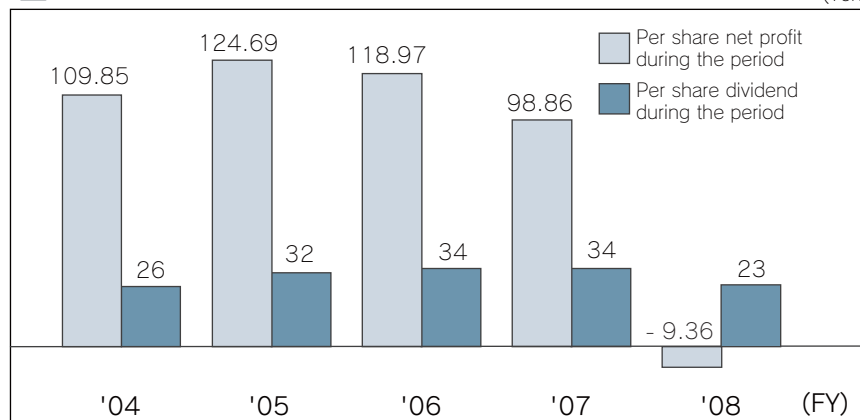
■ Breakdown of Vehicle Sales Volume (April 1, 2008 to March 31, 2009)



■ Profit (billions of yen)

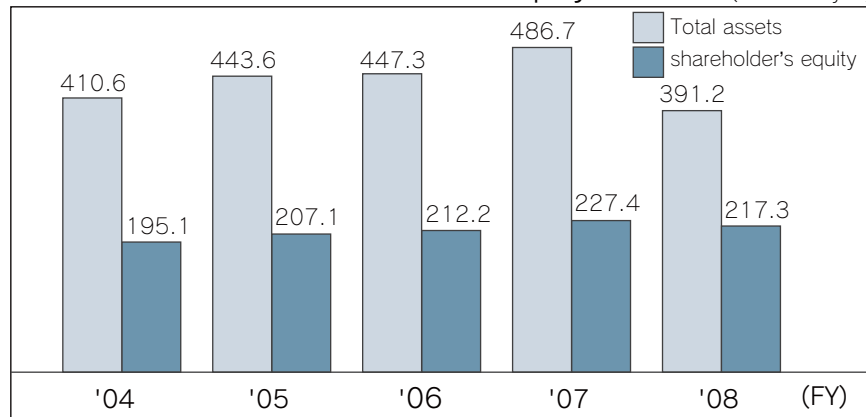


■ Per Share Net Profit and Dividend (Yen)

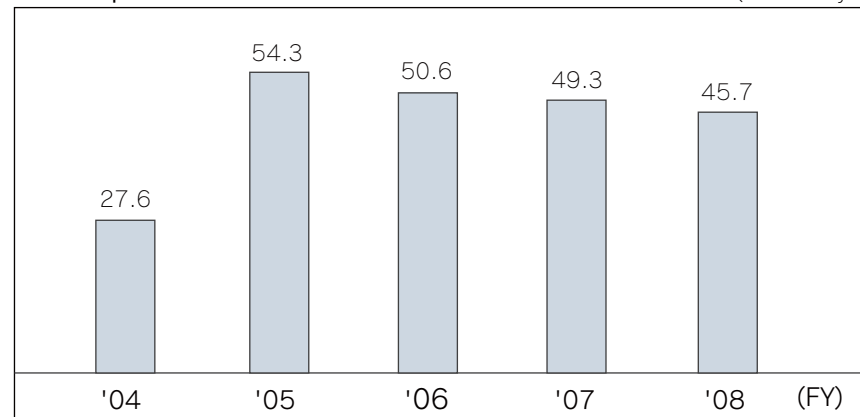


Shifts in Economic Indicators (consolidated basis)

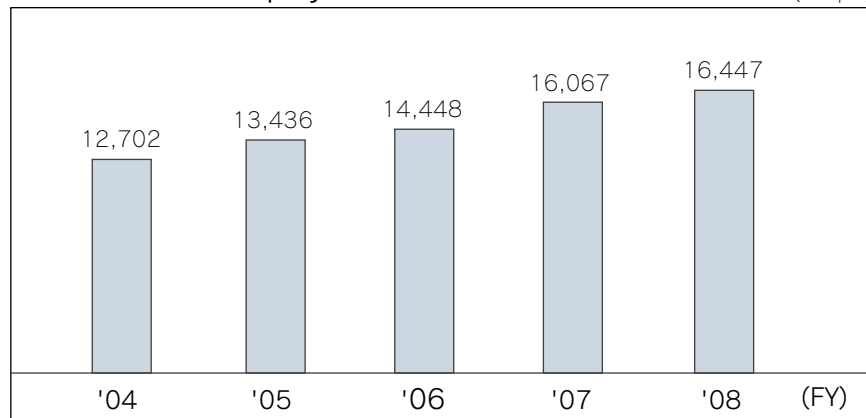
■ Total assets and shareholder's equity (billions of yen)



■ Capital investment (billions of yen)



■ Number of employees (People)



■ Unconsolidated and consolidated economic index (FY2007)

	Unconsolidated	Consolidated
Net sales	1,581.1 billion yen	1,651.2 billion yen
Current income	1.4 billion yen	- 0.5 billion yen
Net income	0.9 billion yen	- 1.0 billion yen
Net income per share	8.01 yen	- 9.36 yen
Total assets	364.3 billion yen	391.2 billion yen
Net Asset Value	206.8 billion yen	217.3 billion yen
Return on Asset (ROA)	0.20%	0.20%
Return on Equity (ROE)	0.40%	0.50%
Capital investment	26.4 billion yen	45.7 billion yen
Number of employees (March 2009)	11,586	16,447



● For more information, please visit our website homepage for "Shareholders and Investors"
<http://www.toyota-body.co.jp/ir/index.html>

Main Plants



■ Head office·Fujimatsu Plant

100, Kanayama Ichiriyama-cho, Kariya City, Aichi Prefecture

Main products

- Estima
- Voxy
- Ipsum
- Estima Hybrid
- Noah
- Prius



■ Inabe Plant

10, Ichinohara Inabe-cho, Inabe City, Mie Prefecture

Main products

- Alphard
- Hiace
- Vellfire
- Regius Ace



■ Yoshiwara Plant

25, Kamifujiike Yoshiwara-cho, Toyota City, Aichi Prefecture

Main products

- Land Cruiser 200
- Lexus 570 (Export model)
- Land Cruiser 70 (Export model)
- Coaster



■ Kariya Plant

2-1, Showa-cho, Kariya City, Aichi Prefecture

Main products

- Welfare vehicles (Welcab)



■ Kotobuki New Development Center

1-36-1, Kotobuki-cho, Toyota City, Aichi Prefecture



Domestic and Overseas Consolidated Subsidiary Companies and Affiliate Companies

■ Domestic / Production Companies / Consolidated Subsidiary Companies

Tokai Utility Motor Co., Ltd.

Established : 1958
Main Businesses : Manufacture and sales of special-purpose vehicles
Capital / Investment : 95 million yen
URL : <http://www.tns.ne.jp/tum/>



Toyota Body Seiko Co., Ltd.

Established : 1961
Main businesses : Manufacture and sales of seat functions and precision parts
Capital / Investment : 869 million yen
URL : <http://www.tyseiko.co.jp/>



Ace Industry Co., Ltd.

Established : 1974
Main Businesses : Manufacture and sales of auto parts, equipments, ozone products, linear motors
Capital / Investment : 30 million yen
URL : <http://www.ace-kk.co.jp/>



Tokai Parts Industry Co., Ltd.

Established : 1999
Main businesses : Manufacture and sales of presses and sheet metal parts
Capital / Investment : 66 million yen
URL : <http://www.tbk-kk.com/>



Gifu Auto Body Co., Ltd.

Established : 1940
Main businesses : Manufacture and sales of vehicle bodies and match parts
Capital / Investment : 1,175 million yen
URL : <http://www.gifubody.co.jp/>



■ Domestic / Production Companies / Equity-method affiliates

Toyotomi Kiko Co., Ltd.

Established : 1960
Main businesses : Manufacture and sales of automotive parts
Capital / Investment : 480 million yen
URL : <http://www.toyotomi-kiko.co.jp/>

Coberuku Co., Ltd.

Established : 1968
Main businesses : Manufacture and sales of automotive parts

Domestic and Overseas Consolidated Subsidiary Companies and Affiliate Companies

■ Domestic / Others / Consolidated subsidiary Companies

TABMEC Co., Ltd.

Established : 1985
Main Businesses : Comprehensive maintenance of plants and facilities
Capital / Investment : 30 million yen
URL : <http://www.tabmec.jp/>



Toyota Auto Body R & D Co., Ltd.

Established : 1990
Main Businesses : Testing and designing auto parts
Capital / Investment : 303 million yen
URL : <http://www.toyota-bodyrad.co.jp/hpdata/>



Life Service & Security Corporation

Established : 2000
Main Businesses : Offers administrative and welfare programs services and security agency
Capital / Investment : 20 million yen
URL : <http://www.lsc.jp/>



Inatec Co., Ltd.

Established : 2000
Main Businesses : Environmental analysis and measurement approval
Capital / Investment : 5 million yen



Life Creation Co., Ltd.

Established : 1993
Main Businesses : Management of off-road and auto camp facilities
Capital / Investment : 75 million yen
URL : <http://www.lc-saf.co.jp/>



Life Support Co., Ltd.

Established : 1999
Main Businesses : Sales of nursing-care goods and home help services
Capital / Investment : 80 million yen



Domestic and Overseas Consolidated Subsidiary Companies and Affiliate Companies

■ Overseas / Production Company / Consolidated Subsidiary

PT.Sugity Creatives

Location : Indonesia
 Established : 1995
 Main Businesses : Manufacture and sales of passenger/
 commercial vehicles and accessories
 Capital / Investment : 37.74 billion Indonesian rupiah
 Owned(%) : 88.52



PT.Toyota Auto Body-Tokai Extrusion

Location : Indonesia
 Established : 2005
 Main Businesses : Manufacture and sales of extrusion
 molded plastic and rubber parts
 Capital / Investment : 8.245 billion Indonesian rupiah
 Owned(%) : 50.94



Chun Shyang Shin Yeh Industry Co., Ltd.

Location : Republic of China (Taiwan)
 Established : 1997
 Main Businesses : Manufacture and sales of dies, sheet
 metal parts, and pressed parts
 Capital / Investment : 140 million New Taiwan dollar
 Owned(%) : 51.00



Thai Auto Conversion Co., Ltd.

Location : Thailand
 Established : 2004
 Main Businesses : Manufacture and sales of specially-
 equipped vehicles
 Capital / Investment : 74 million Thai baht
 Owned(%) : 40.00



Toyota Auto Body(Malaysia) Sdn. Bhd.

Location : Malaysia
 Established : 2005
 Main Businesses : Manufacture and sales of large plastic
 parts for automotive use
 Capital / Investment : 100 million ringgit
 Owned(%) : 100.00



Auto Parts Manufacturing Mississippi Inc.

Location : U.S.A.
 Established : 2007
 Main Businesses : Manufacture of automotive stamped,
 body weld and plastic parts
 Capital / Investment : 32 million US dollar
 Owned(%) : 100.00

■ Overseas / Production Company / Equity-method affiliate

Thai Auto Works Co., Ltd.

Location : Thailand
 Established : 1988
 Main Businesses : Manufacture and sales of vehicle bodies
 and match parts
 Capital / Investment : 10 million Thai baht
 Owned(%) : 20.00



Please share your opinion and anything that you think is needed concerning this report.

A survey can be filled out in our website homepage in the address below
(Also found on the top of the Environmental and Social Report homepage)

 <https://www.toyota-body.co.jp/english/csr/contacts/enquete2009.html>

Publishing

Main Office Toyota Auto Body Co., Ltd.
100, Kanayama Ichiriyama-cho, Kariya City, Aichi Prefecture 448-8666

Inquires Corporate Planning Division
TEL. 0566-36-7510 FAX. 0566-36-9113 E-mail TY.KANKYOU@mail.toyota-body.co.jp.

Publishing Date July 2009 (Next publishing scheduled for summer 2010)

 <http://www.toyota-body.co.jp/>

Participation in the "Team Minus 6%" National Movement for the Prevention of Global Warming

Toyota Auto Body is Participating in the "Team Minus 6%" national movement for the prevention of global warming.

①Setting air conditioning temperature to 28°C, and ②we are making efforts to limit CO₂ emissions and we are encouraging dressing lightly during the summer months.

