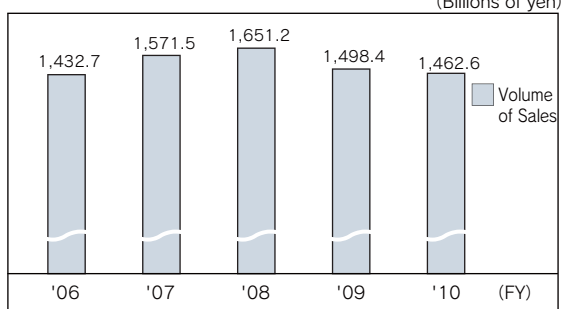
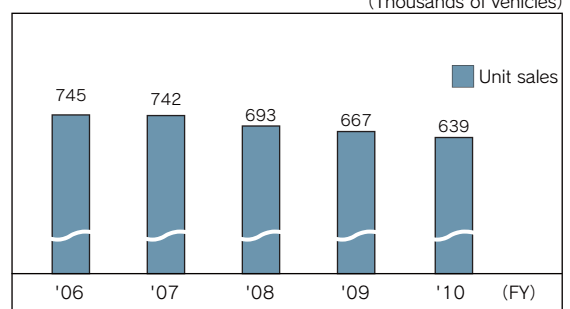


Shifts in Economic Index (consolidated basis)

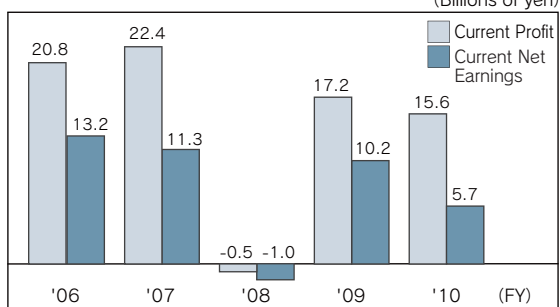
Volume of sales



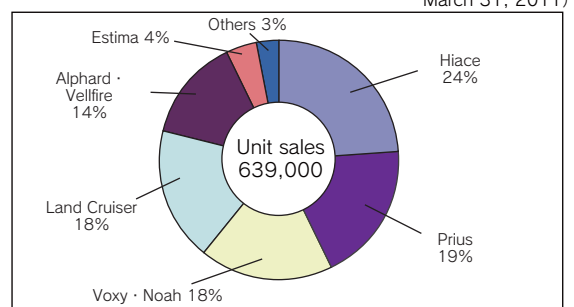
Unit sales



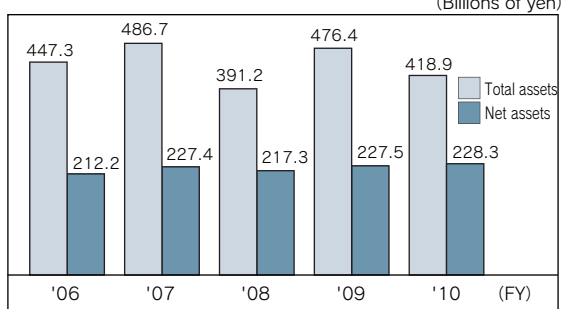
Profit



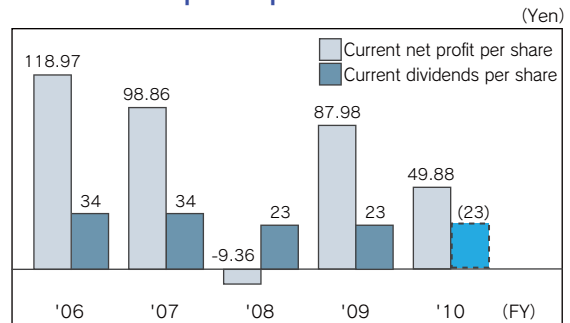
Breakdown of unit sales



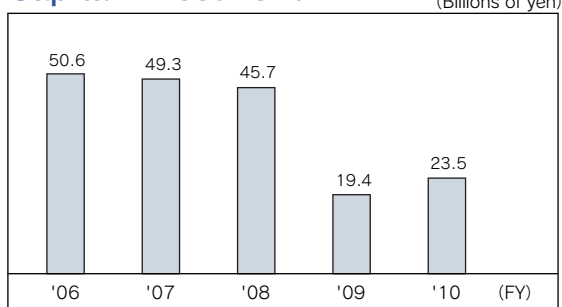
Total assets and net assets



Current net profit per stock / Dividends



Capital investment



Unconsolidated and Consolidated Economic Index (FY2010)

	Unconsolidated	Consolidated
Net sales	1,389.1 bil. yen	1,462.6 bil. yen
Ordinary income	10.4 bil. yen	15.6 bil. yen
net income	4.2 bil. yen	5.7 bil. yen
Net income per share	36.47 yen	49.88 yen
Total assets	394.7 bil. yen	418.9 bil. yen
Net asset value	213.1 bil. yen	228.3 bil. yen
Return on assets (ROA)	1.00%	1.29%
Return on equity (ROE)	1.99%	2.58%
Capital investment	14.2 bil. yen	23.5 bil. yen
Number of employees (End of March 2011)	11,694	16,872

Number of employees

