



2016 CSR REPORT




Contents

■ Toyota Auto Body Profile	2	■ Developing Employees and Creating the Workplace	18
■ Top Message	5		
■ Corporate Principles	7	■ Social Contributions	27
■ Corporate Governance	7		
		■ Friendly to the Global Environment	30
■ Creating Ever-Better Cars	8	■ Product Environment	31
■ Meeting Customer Expectations	9	■ Production Environment	34
■ Creating High Quality Cars	16	■ Environmental Management	37

Editorial policy

Toyota Auto Body is dedicated to corporate activities that will contribute to a prosperous society by creating ever-better cars.

This report introduces the CSR activities of Toyota Auto Body and the Toyota Auto Body Group so that they can be more widely known.

Additionally, in order to convey our efforts more easily, our activities are featured in this CSR report. Readers who are interested in finding out more can use the click icons to access detailed information. 

All opinions or concerns about this report and our activities are welcome via the questionnaire survey on the last page.

Report scope and time period

Report scope: Toyota Auto Body and consolidated subsidiaries

Reporting period: In principle, this report covers from April 2015 through March 2016; however, reporting is extended beyond March 2015 for items where progress after this period occurred.

Cars on the cover



Land Cruiser 200
(Re-designed model available for sale in August 2015)



Lexus LX
(Re-designed model available for sale in September 2015)



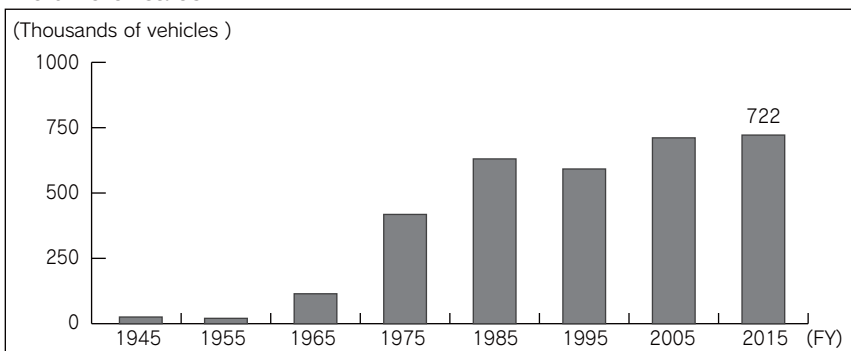
Prius rotating and tilting passenger seat vehicle
(Re-designed model available for sale in December 2015)

Toyota Auto Body Profile

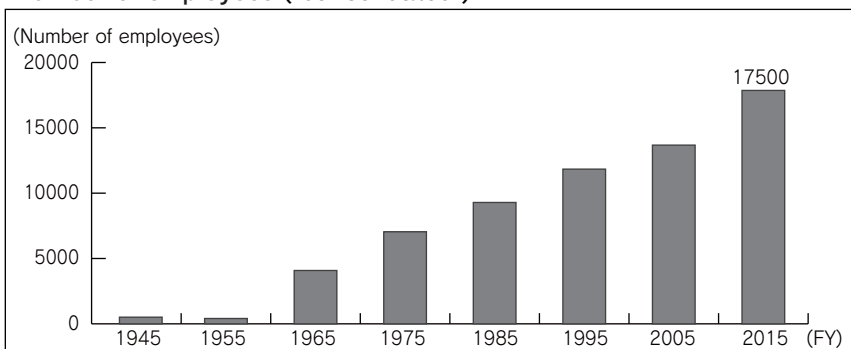
Overview

Company Name Toyota Auto Body Co., Ltd.
 Head Office 100, Kanayama Ichiriyama-cho,
 Kariya City, Aichi Prefecture, Japan
 Established August 31, 1945
 Representative President, Keiji Masui
 Invested Capital 10.371 billion yen
 Total Sales 1,831.9 billion yen
 (FY2015 consolidated)
 Manufacturing Head Office/Fujimatsu Plant,
 Facilities Inabe Plant, Yoshiwara Plant,
 Kariya Plant,
 Kotobuki New Development Center

Volume of sales



Number of employees (consolidated)



Related Information	Company Outline
	Product Lineup

Main Products

The year when the first generation of each model was introduced is shown in [].

Minivans



Alphard
[2002]



Vellfire
[2008]



Estima
[1990]



Voxy
[2001]



Noah
[2001]



Esquire
[2014]

Commercial / Commuter vehicles



Hiace
[1967]



Coaster
[1969]



Land Cruiser
200
[1998]



Lexus LX
[2007]



Land Cruiser
70 van
[1984]



COMS
[2000]

SUV

Small EV

Assisted mobility vehicles

Special Purpose Vehicles



Wheelchair-accessible
Vehicle(Rear Lift type)
[1968]



Side Lift-up Seat
Vehicle
[1994]



Wheelchair-accessible
Vehicle(Rear Slope type)
[2001]



Well Carry
(Special Purpose
Friend-Matic Vehicle)
[2009]



Rotating and
tilting passenger
seat vehicle
[2015]



Freezer and
refrigerator van
[1979]

Toyota Auto Body Profile

Main Business Sites

Production Bases



Head Office/Fujimatsu Plant

100, Kanayama Ichiriyama-cho
Kariya City, Aichi Prefecture

Main Products

Estima, Voxy, Noah
Esquire, Land Cruiser 70



Inabe Plant

10, Ichinohara Inabe-cho Inabe City
Mie Prefecture

Main Products

Alphard, vellfire
Hiace, Regius Ace



Yoshiwara Plant

25, Kamifujike Yoshiwara-cho
Toyota City, Aichi Prefecture

Main Products

Land Cruiser 200, Lexus LX
Land Cruiser 70, Coaster



Kariya Plant

2-1, Showa-cho, Kariya City,
Aichi Prefecture

Main Products

COMS
Assisted mobility vehicles (Welcab)

Development Bases



Development Center

Inside Head office / Fujimatsu Plant



Production Technology Center

Inside Head office / Fujimatsu Plant



Kotobuki New Development Center

1-36-1, Kotobuki-cho, Toyota City,
Aichi Prefecture

Domestic and Overseas Consolidated Subsidiary Companies

[] indicates the year when the company was founded.
< > indicates the primary area of business.

Domestic Consolidated Subsidiary Companies

Gifu Auto Body Co., Ltd.

(Kakamigahara city, gifu Pref.) [1940]

< Manufacture and sales of automobiles and automotive parts >



Tokai Utility Motor Co., Ltd.

(Anjo City, Aichi Pref.) [1954]

< Manufacture and sales of special purpose vehicles >



Toyota Body Seiko Co., Ltd.

(Takahama City Aichi Pref.) [1992]

< Manufacture and sales of seat and other parts >



Ace Industry Co., Ltd.

(Kariya City, Aichi Pref.) [1974]

< Manufacture and sales of parts, equipment, and other products >



Tokai Parts Industry Co., Ltd.

(Kariya City, Aichi Pref.) [1999]

< Manufacture and sales of stamped and sheet-metal parts >



TABMEC Co., Ltd.

(Kariya City, Aichi Pref.) [1985]

< General maintenance of buildings and associated equipment >



Toyota Auto Body R&D co., Ltd.

(Kirishima City, Kagoshima Pref.) [1990]

< Design and testing of automotive parts >



Life Service & Security Corporation

(Kariya City, Aichi Pref.) [2000]

< Management of office and employee recreational facilities, security agency work >



Toyota Auto Body Profile

Domestic Consolidated Subsidiary Companies

□ indicates the year when the company was founded.
< > indicates the primary area of business

Inatec Co., Ltd.

(Inabe City, Mie Pref.) [2000]

<Environmental analysis and measurement certification>



Life Creation Co., Ltd

(Toyota City, Aichi Pref.) [1993]

<Operation of off-road facilities>



Life Support Co., Ltd.

(Anjyo City, Aichi Pref.) [1999]

<Sales of nursing care supplies, home helper services>



GI Service Co., Ltd.

(Kakamigahara City, Gifu Pref.) [1988]

<Employee recreational, plant maintenance, insurance and other services>



*A 100% wholly-owned subsidiary company of Gifu Suto Body Co., Ltd., which is a subsidiary company of Toyota Auto Body

Overseas Consolidated Subsidiary Companies

PT.Sugity Creatives

(Indonesia) [1995]

<Manufacture and sales of vehicles and resin parts>



Chun Shyang Shin Yeh Industry Co., Ltd.

(Republic of China (Taiwan)) [1997]

<Manufacture and sales of stamped and sheet-metal parts, dies, and other products>



Thai Auto Conversion Co., Ltd.

(Thailand) [2004]

<Manufacture and sales of special purpose vehicles>



PT.Toyota Auto Body-Tokai Extrusion

(Indonesia) [2005]

<Manufacture and sales of rubber and resin molded parts>



Toyota Auto Body(Malaysia) Sdn. Bhd.

(Malaysia) [2005]

<Manufacture and sales of stamped, sheet-metal, and resin parts>



Auto Parts Manufacturing Mississippi Inc.

(U.S.A.) [2007]

<Manufacture and sales of stamped, welded, and resin parts>



Toyota Auto Works Co., Ltd.

(Thailand) [1988]

<Manufacture and sales of vehicles>



PT.Resin Plating Technology

(Indonesia) [2013]

<Manufacture and sales of resin plated parts and resin parts>



Tab Minth Mobility Equipment Co., Ltd.

(China) [2011]

<Sales of assistive devices>



Seat Metal Parts Thailand Co., Ltd.

(Thailand) [2015]

<Manufacture and sales of seat parts and other products>



* Wholly-owned subsidiary of our subsidiary Toyota Body Seiko Co., Ltd.

Related Information



Overseas Subsidiary

Contributing to a Prosperous Society by Creating Ever-Better Cars



President
Keiji Masui

増井敬二

I would like to express my thanks to everyone for their continuing understanding and support.

Toyota Auto Body was founded as a specialized truck manufacturer in 1945, and since that time we have remained dedicated to producing cars that transport cargo and carry people, providing essential support to people in their everyday lives. This spirit has driven us to develop and produce cars that meet the needs of our customers, including the all steel body BX Series trucks and the monocoque body commercial vehicle Hiace van, both of which were the first of their kind in Japan, and the Estima with the world's first midship component layout.

The environment surrounding our business is undergoing large changes including energy and resource problems, an aging society, and the progress of globalization that is bringing diversifying values. Toyota Auto Body intends to face these issues directly and provide environmentally-friendly mobility freedom and happiness to all people. We will contribute to a prosperous society by creating cars that are safe, dependable, and fun to drive.

Aiming to create ever-better cars that exceed customer expectations

The re-designed model Land Cruiser 200 that was released in August of last year, and the Lexus LX that is being sold in Japan for the first time, have both been highly popular. With further advances in safety systems and other equipment, while also maintaining the high durability needed in harsh environments around the world, these are cars that people can feel safe riding in.

In order to provide mobility freedom and happiness to all people, we are now working on development and production of assisted mobility vehicles for elderly and disabled persons, and also of the COMS single-occupant electric vehicle that provides a boost to environmentally friendly living convenience and will contribute to the creation of prosperous cities.

In terms of creating vehicles that are exciting and fun to drive, at the Tokyo Motor Show in October of last year, we exhibited a concept car that manifests our ideas for “New Lifestyles Together with Cars” that drew the interest of many visitors.

Contributing to a prosperous society

We understand that preservation of the Earth's environment is an important issue for the creation of a prosperous society, and believe that earning the trust and love of local communities is important in order to be a company which is needed by society. For these reasons, we carry out a number of activities that contribute to society, centering on the environment, welfare, and raising the next generation.

For the environment, in product development we are working to develop weight-reducing technologies that will contribute to higher fuel economies, and for product designs that maximize recycling. In order to reduce energy use and CO₂ emissions at our plants, we are working to shorten the painting process, utilize energy-recycling air conditioning, and incorporate other energy-saving and low-CO₂ production technologies. This year in March, we formulated the sixth Toyota Auto Body Environmental Plan, and have set target values for each process from design to production. We are now launching new programs to achieve these targets.

We are also working for environmental preservation, including the company forest activities in Aichi, Mie, and Kagoshima prefectures, and the mangrove planting activity conducted in cooperation with subsidiary companies in Indonesia. We also hold a rice-farming experience in which local elementary school students participate, as well as environmental workshops and other activities using our Fure-Ai Park (Fureai: interaction, Fureru: touch and feel, Ai: love) located next to Head Office Plant in collaboration with governments, and were awarded the Silver Prize at the Aichi Environmental Awards in February 2016. We intend to deepen our relationships with members of the local communities, and hope that this park will be an enduring forum for interaction and communication.

In local communities, we operate a transport service for wheelchair users using the assisted mobility vehicles that we produce, make visits to elderly nursing care facilities, and engage in volunteer cleaning services of wheelchairs and the like. We also utilize the expertise that we have developed internally for exhibits at local manufacturing exhibitions, and accept plant tours primarily by nearby elementary schools to learn about automobile manufacturing. In addition, we are carrying out activities to support the raising of future generations, including sports support provided by our company's sports clubs.

For the future

In August of last year, Toyota Auto Body celebrated the 70th anniversary of our founding. We are profoundly grateful for the support we received from our customers and the many people involved with us who made this success possible. In April of this year, the "CV Company" * business unit that centers on Toyota products was launched, and our company plays a key role in its operations. This has offered us the opportunity for great advances by linking our philosophy of "contributing to a prosperous society by creating ever-better cars" and our passion (DNA) to future achievements. We are renewing our dedication to a global supply of assisted mobility vehicles and compact EV in addition to minivans, commercial vehicles, and SUV, in order to continue providing support for everyday living around the world and create ever-better cars.

For this purpose, I would like to ask for everyone's continued support and guidance.

June 2016

* CV Company: CV is an acronym for "commercial vehicles", a category which includes minivans for passenger use. This business unit is responsible for creating cars to provide many kinds of support for everyday living around the world, meeting a range of needs ranging from commercial needs to passenger needs.

Corporate Principles

Toyota Auto Body conducts business based on the company motto and fundamental principles which carry on the Five Main Principles of Toyoda (formerly known as the Toyoda Precepts), focusing on all stakeholders in order to contribute to the development of a sustainable society.

Toyoda Precepts

(Created in 1935)

1. Be contributive to the development and welfare of the country by working together, regardless of position, in faithfully fulfilling your duties;
2. Be at the vanguard of the times through endless creativity, inquisitiveness and pursuit of improvement;
3. Be practical and avoid frivolity;
4. Be kind and generous, strive to create a warm, homelike atmosphere; and
5. Be reverent, and show gratitude for things great and small in thought and deed



Company Motto

(Created in 1963)

Toyota Auto Body stands with the global view for research and manufacturing while contributing to society with our fine products to have unceasing advancement of business practices

Development:

Stay ahead of current trend and respect ideas and time

Amity:

Encourage honesty and cooperation with sincerity and faith

Appreciation:

Reflection should be the nourishment for the enterprising spirit, and live for the joy of diligent labor

Fundamental Principles

(Created in 1995, revised in 2004)

1. Having harmonization with environment and open and fair corporate ethics as our foundation, our goal is to contribute to building a prosperous society as a trusted company in international community.
2. Placing customer as our priority first, provide "quality products" to enrich their life space by research and creations.
3. Invigorate employees and organization to develop our company culture with creativity and vitality to pursue company prosperity as well as happiness our employees.
4. By building business relationships based on mutual trust, strengthen management practices with each other, and create long-term growth and prosperous coexistence.

 [CSR Policy]

Corporate Governance

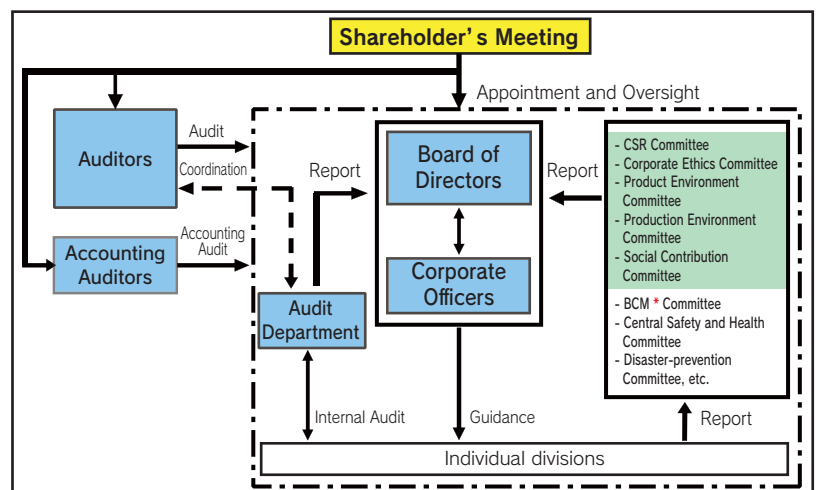
In addition to greater efficiency, at the same time we are also working for mechanisms that ensure highly transparent management.

The Executive Member System was introduced in order to ensure quick decision-making for our business development strategy and to speed up our operations.

The Audit Department for all divisions at Toyota Auto Body performs internal audits centering on the areas of compliance and reliable financial reporting. In addition, we also carry out audits which include external auditors, as well as accounting audits by accounting auditors.

We have also established the CSR Committee, which is comprised of all board directors and auditors, as well as four committees below the CSR Committee for deliberating and taking action on important issues.

Toyota Auto Body Corporate Governance



* Business Continuity Management. This activity formulates a business continuity plan (BCP) for recovering the functions of all divisions, and carries out training and other programs to operate a PDCA cycle and carry out review and improvement.