



# 2017 CSR REPORT




# Contents

■ Toyota Auto Body Profile	2	■ Developing Employees and Creating the Workplace	18
■ Top Message	5		
■ Corporate Principles	7	■ Social Contributions	28
■ Corporate Governance	7		
<hr/>			
■ Creating Ever-Better Cars	8	■ Friendly to the Global Environment	31
■ Creating a Better Coaster	8	■ Product Environment	33
■ Assisted Mobility Vehicles and Special Purpose Vehicles to Meet a Wide Range of Needs	14	■ Production Environment	35
■ Environmentally Friendly Cars (Ultra Compact EV COMS, Fuel Cell Vehicles)	15	■ Environmental Management	36
■ Creating High Quality Cars	16		
■ Working Together with Our Suppliers	17		

## Editorial policy

Toyota Auto Body is dedicated to corporate activities that will contribute to a prosperous society by creating ever-better cars. Beginning with creating ever-better cars through the Coaster, which represents the first model change since the launch of the CV Company, this report provides an overview of the CSR activities of Toyota Auto Body and the Toyota Auto Body Group so that they can be more widely known.

Additionally, in order to convey our efforts more easily, our activities are featured in this CSR report. Readers who are interested in finding out more can use the click icons to access detailed information. 

All opinions or concerns about this report and our activities are welcome via the questionnaire survey on the last page.

## Report scope and time period

**Report scope:** Toyota Auto Body and consolidated subsidiaries

**Reporting period:** In principle, this report covers from April 2016 through March 2017; however, reporting is extended beyond March 2017 for items where progress after this period occurred.

### Cars on the cover



**Coaster**  
(New model released Jan. 2017)



**Estima**  
(New model released June 2016)





**Hiace rear lift model**  
(Released June 2016)

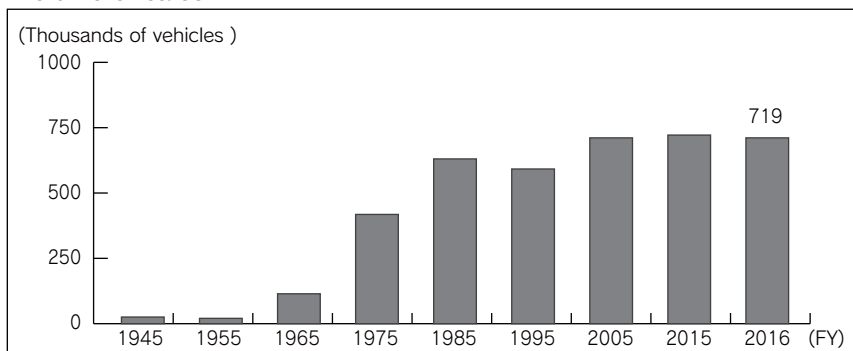
# Toyota Auto Body Profile

## Overview

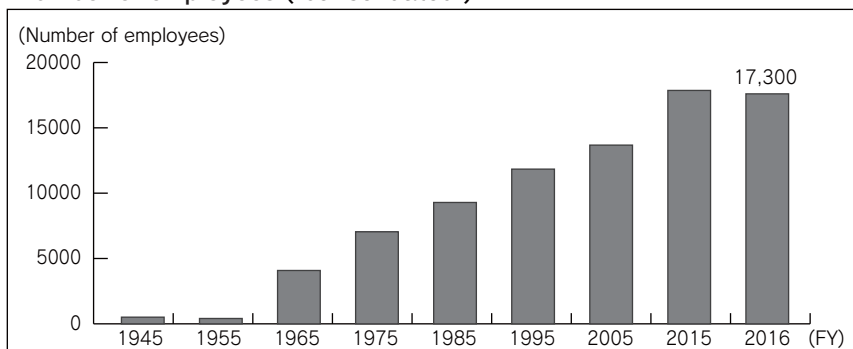
Company Name Toyota Auto Body Co., Ltd.  
 Head Office 100, Kanayama Ichiriyama-cho, Kariya City, Aichi Prefecture, Japan  
 Established August 31, 1945  
 Representative President, Keiji Masui  
 Invested Capital 10.371 billion yen  
 Total Sales 1,844.9 billion yen (FY2016 consolidated)  
 Manufacturing Facilities Head Office / Fujimatsu Plant, Inabe Plant, Yoshiwara Plant, Kariya Plant, Kotobuki New Development Center

Related Information	 <a href="#">Company Outline</a>
	 <a href="#">Product Lineup</a>

### Volume of sales



### Number of employees ( consolidated )



## Main Products

The year when the first generation of each model was introduced is shown in [ ].

### Minivans



Alphard  
[2002]



Vellfire  
[2008]



Estima  
[1990]



Voxy  
[2001]



Noah  
[2001]



Esquire  
[2014]

### Commercial / Commuter vehicles



Hiace  
[1967]



Coaster  
[1969]



Land Cruiser 200  
[1998]



Lexus LX  
[2007]



Land Cruiser 70 van  
[1984]



COMS  
[2000]

### SUV

### Small EV

### Assisted mobility vehicles

### Special Purpose Vehicles



Wheelchair-accessible Vehicle (Rear Lift type)  
[1968]



Side Lift-up Seat Vehicle  
[1994]



Wheelchair-accessible Vehicle (Rear Slope type)  
[2001]



Well Carry (Special Purpose Friend-Matic Vehicle)  
[2009]



Rotating and tilting passenger seat vehicle  
[2015]



Freezer and refrigerator van  
[1979]

# Toyota Auto Body Profile

## Main Business Sites

### Production Bases



#### Head Office/Fujimatsu Plant

100, Kanayama Ichiriyama-cho  
Kariya City, Aichi Prefecture

##### Main Products

Estima, Voxy, Noah  
Esquire, Land Cruiser 70



#### Inabe Plant

10, Ichinohara Inabe-cho Inabe City  
Mie Prefecture

##### Main Products

Alphard, vellfire  
Hiace, Regius Ace



#### Yoshiwara Plant

25, Kamifujike Yoshiwara-cho  
Toyota City, Aichi Prefecture

##### Main Products

Land Cruiser 200, Lexus LX  
Land Cruiser 70



#### Kariya Plant

2-1, Showa-cho, Kariya City,  
Aichi Prefecture

##### Main Products

COMS  
Assisted mobility vehicles (Welcab)

### Development Bases



#### Development Center

Inside Head office / Fujimatsu Plant



#### Production Technology Center

Inside Head office / Fujimatsu Plant



#### Kotobuki New Development Center

1-36-1, Kotobuki-cho, Toyota City,  
Aichi Prefecture

## Domestic and Overseas Consolidated Subsidiary Companies

[ ] indicates the year when the company was founded.  
< > indicates the primary area of business.

### Domestic Consolidated Subsidiary Companies

#### Gifu Auto Body Co., Ltd.

(Kakamigahara city, gifu Pref.) [1940]

< Manufacture and sales of automobiles and automotive parts >



#### Tokai Utility Motor Co., Ltd.

(Aniyo City, Aichi Pref.) [1954]

< Manufacture and sales of special purpose vehicles >



#### Toyota Body Seiko Co., Ltd.

(Takahama City Aichi Pref.) [1992]

< Manufacture and sales of seat and other parts >



#### Ace Industry Co., Ltd.

(Kariya City, Aichi Pref.) [1974]

< Manufacture and sales of parts, equipment, and other products >



#### Tokai Parts Industry Co., Ltd.

(Kariya City, Aichi Pref.) [1999]

< Manufacture and sales of stamped and sheet-metal parts >



#### TABMEC Co., Ltd.

(Kariya City, Aichi Pref.) [1985]

< General maintenance of buildings and associated equipment >



#### Toyota Auto Body R&D co., Ltd.

(Kirishima City, Kagoshima Pref.) [1990]

< Design and testing of automotive parts >



#### Life Service & Security Corporation

(Kariya City, Aichi Pref.) [2000]

< Management of office and employee recreational facilities, security agency work >



# Toyota Auto Body Profile

## Domestic Consolidated Subsidiary Companies

□ indicates the year when the company was founded.  
< > indicates the primary area of business

### Inatec Co., Ltd.

(Inabe City, Mie Pref.) [2000]

<Environmental analysis and measurement certification>



### Life Creation Co., Ltd

(Toyota City, Aichi Pref.) [1993]

<Operation of off-road facilities>



### Life Support Co., Ltd.

(Anjyo City, Aichi Pref.) [1999]

<Sales of nursing care supplies, home helper services>



### GI Service Co., Ltd.

(Kakamigahara City, Gifu Pref.) [1988]

<Employee recreational, plant maintenance, insurance and other services>



\*A 100% wholly-owned subsidiary company of Gifu Suto Body Co., Ltd., which is a subsidiary company of Toyota Auto Body

## Overseas Consolidated Subsidiary Companies

### PT.Sugity Creatives

(Indonesia) [1995]

<Manufacture and sales of vehicles and resin parts>



### Chun Shyang Shin Yeh Industry Co., Ltd.

(Republic of China (Taiwan)) [1997]

<Manufacture and sales of stamped and sheet-metal parts, dies, and other products>



### Thai Auto Conversion Co., Ltd.

(Thailand) [2004]

<Manufacture and sales of special purpose vehicles>



### PT.Toyota Auto Body-Tokai Extrusion

(Indonesia) [2005]

<Manufacture and sales of rubber and resin molded parts>



### Toyota Auto Body(Malaysia) Sdn. Bhd.

(Malaysia) [2005]

<Manufacture and sales of stamped, sheet-metal, and resin parts>



### Auto Parts Manufacturing Mississippi Inc.

(U.S.A.) [2007]

<Manufacture and sales of stamped, welded, and resin parts>



### Toyota Auto Works Co., Ltd.

(Thailand) [1988]

<Manufacture and sales of vehicles>



### PT.Resin Plating Technology

(Indonesia) [2013]

<Manufacture and sales of resin plated parts and resin parts>



### Tab Minth Mobility Equipment Co., Ltd.

(China) [2011]

<Sales of assistive devices>



### Seat Metal Parts Thailand Co., Ltd.

(Thailand) [2015]

<Manufacture and sales of seat parts and other products>



\* Wholly-owned subsidiary of our subsidiary Toyota Body Seiko Co., Ltd.

Related Information



Overseas Subsidiary

## *Contributing to a Prosperous Society by Creating Ever-Better Cars*



President  
Keiji Masui

増井敬二

I would like to express my thanks to everyone for their continuing understanding and support.

Toyota Auto Body was founded as a specialized truck body manufacturer in 1945, and has continued to develop and produce cars that meet the needs of the time, including the all steel cab BX Series trucks and the monocoque body commercial vehicle Hiace van, both of which were the first of their kind in Japan, and the Estima with the world's first midship component layout.

In April of this year, we reached the milestone of 30 million total vehicles produced. To thank for this, we have the customers who have come to love our products, and our suppliers and affiliated companies, and I would again like to express my gratitude to all of them.

In April of last year, we launched the "CV Company"\* business unit that centers on Toyota Motor products. To benefit people and the world, the mission of the CV Company is "creating ever-better CV" in order to support the lives of customers worldwide. As the core of the CV Company, we have joined together in working to meet customer expectations while deepening our collaboration with Toyota Motor Corporation in areas including personnel exchange and work innovations.

As one part of these efforts, for the new model Coaster that was released in January of this year, all of the CV Company staff responsible for all steps from development to production joined together to create improvements in comfort, safety, and environmental performance for this first model change in 24 years. We were able to give world a vehicle befitting the first-ever model change of the CV Company, and which has become highly popular among the customers.

\* CV: Commercial Vehicle

In terms of environmental preservation, since launching the first Toyota Auto Body Environmental Action Plan in 1993, each year we have set targets and carried out programs to achieve them. Last year in March we formulated the sixth Toyota Auto Body Environmental Action Plan (2016 – 2020), and are actively working to incorporate technologies for energy-saving and low-CO2 production at our production plants, develop weight-reducing technologies that contribute to fuel economy performance, and carry out consolidated environmental management.

In cooperation with nearby elementary schools and government agencies, we utilize the Fure-Ai Park located next to the Head Office Plant for rice-farming experiences, environmental workshops, and other activities. In addition, we also carry out forest maintenance activities, tree planting activities with the participation of local residents, and other activities at our Toyota Auto Body Company Forests located primarily on company land at our offices in Aichi, Mie, Kagoshima, Indonesia, and other areas.

In order to provide mobility freedom and happiness to all people, we are carrying out welfare programs that include the development and production of assisted mobility vehicles and units for elderly and disabled persons, development and production of the COMS single-occupant electric vehicle, operating a transport service for wheelchair users using our assisted mobility vehicles, and volunteer activities that include visits to elderly nursing care facilities and volunteer cleaning of wheelchairs. We intend to continue with activities such as these that reflect our company in the future.

I would also like to sincerely apologize for the great concern and inconvenience caused to many persons as a result of the fire that occurred on a painting line at our Inabe Plant on March 20 of this year. The entire company has joined together and is working for recurrence prevention so that such an accident will never occur again.

For this purpose, I would like to ask for everyone's continued support and guidance.

June 2017

<New Coaster release event: December 2016>



<Rice-planting experience and playing in the mud at Fure-Ai Park>



# Corporate Principles

Toyota Auto Body conducts business based on the company motto and fundamental principles which carry on the Five Main Principles of Toyoda (formerly known as the Toyoda Precepts), focusing on all stakeholders in order to contribute to the development of a sustainable society.

## Toyoda Precepts

(Created in 1935)

1. Be contributive to the development and welfare of the country by working together, regardless of position, in faithfully fulfilling your duties;
2. Be at the vanguard of the times through endless creativity, inquisitiveness and pursuit of improvement;
3. Be practical and avoid frivolity;
4. Be kind and generous, strive to create a warm, homelike atmosphere; and
5. Be reverent, and show gratitude for things great and small in thought and deed



## Company Motto

(Created in 1963)

Toyota Auto Body stands with the global view for research and manufacturing while contributing to society with our fine products to have unceasing advancement of business practices

### Development:

Stay ahead of current trend and respect ideas and time

### Amity:

Encourage honesty and cooperation with sincerity and faith

### Appreciation:

Reflection should be the nourishment for the enterprising spirit, and live for the joy of diligent labor

## Fundamental Principles

(Created in 1995, revised in 2004)

1. Having harmonization with environment and open and fair corporate ethics as our foundation, our goal is to contribute to building a prosperous society as a trusted company in international community.
2. Placing customer as our priority first, provide "quality products" to enrich their life space by research and creations.
3. Invigorate employees and organization to develop our company culture with creativity and vitality to pursue company prosperity as well as happiness our employees.
4. By building business relationships based on mutual trust, strengthen management practices with each other, and create long-term growth and prosperous coexistence.

[CSR Policy]

# Corporate Governance

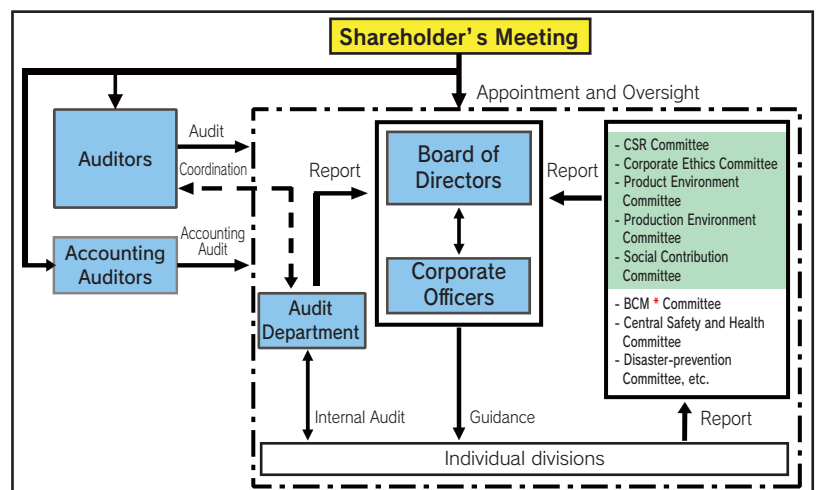
In addition to greater efficiency, at the same time we are also working for mechanisms that ensure highly transparent management.

The Executive Member System was introduced in order to ensure quick decision-making for our business development strategy and to speed up our operations.

The Audit Department for all divisions at Toyota Auto Body performs internal audits centering on the areas of compliance and reliable financial reporting. In addition, we also carry out audits which include external auditors, as well as accounting audits by accounting auditors.

We have also established the CSR Committee, which is comprised of all board directors and auditors, as well as four committees below the CSR Committee for deliberating and taking action on important issues.

## Toyota Auto Body Corporate Governance



\* Business Continuity Management. This activity formulates a business continuity plan (BCP) for recovering the functions of all divisions, and carries out training and other programs to operate a PDCA cycle and carry out review and improvement.